

EP-826DG-CS

24+2G Gigabit Ethernet Rack-mount Smart Switch



SURECOM's lately introduced 24+2G Gigabit Ethernet Rack-Mount Smart Switch delivers the Gigabit speedy data transmission to meet your increasing bandwidth requirement. Powerful and practical smart functions supported make this switch be the perfect tool for your network planning or bandwidth allocating. This high-performance, cost-effective switch is the best solution to increasing bandwidth requirement.

❖ Improving Your Network Performance & Access Security

EP-826DG-CS provides smart function to manage the networking environment, such as VLAN, Trunk. With the VLAN groups, users can be easily classified in logical without physical limitation.

EP-826DG-CS also supports Broadcasting Filtering function to prevent network congestion. It provides high performance connectivity between workgroups and servers.

❖ Optimizing Network Bandwidth Utilization

With bandwidth control makes you to specify the maximum line bandwidth that a particular transfer operation can use. You can follow your demand to arrange network applications, increase your entirety beneficial.

❖ Playing A Variety Role In Network Framework

EP-826DG-CS provides two slots for expanding your network. We provide varies module such as 10/100/1000M Gigabit copper module, 1000Base-SX Gigabit SC type Module. This great solution provides users the perfect flexibility by optionally network framework demand.

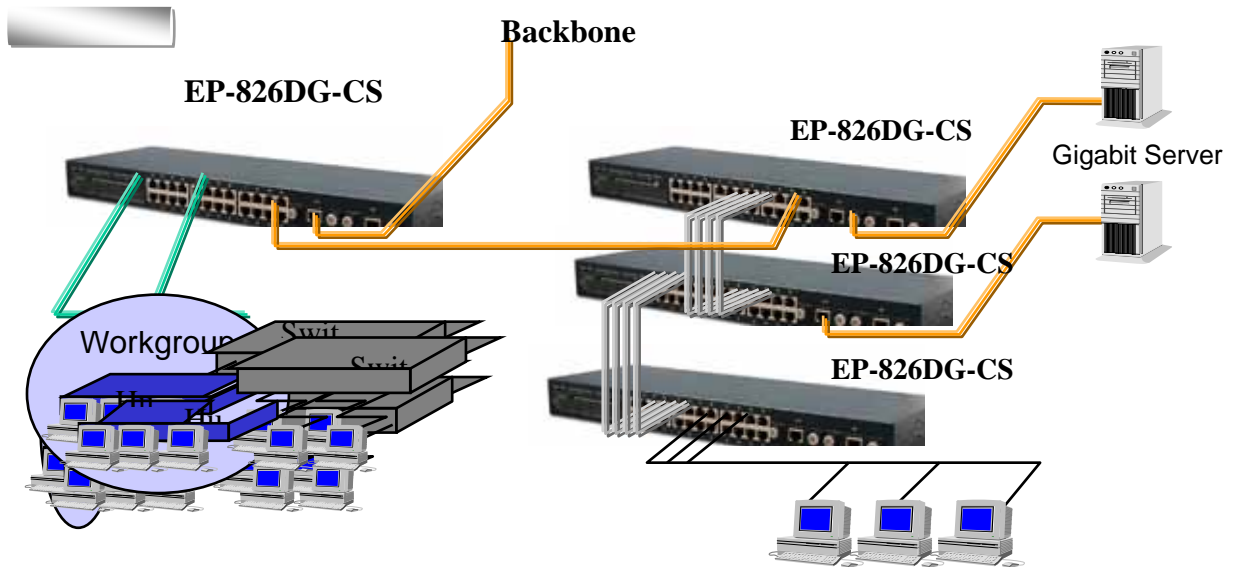
Features

- Provides 24 10BASE-T/100BASE-TX ports & 2 slide-in slots for Copper, Fiber Gigabit port module or 100BASE-FX module insertion
- All the 10/100/1000Mbps ports support full /half-duplex modes and Auto MDI/MDI-X
- Provides store and forward switching scheme
- Performs forwarding and filtering at full wire speed
- Supports port-based VLAN & 802.1Q tag VLAN
- Supports port trunk of up to 8 10/100Mbps ports and 2 Gigabit ports
- Provides 8-level bandwidth control for each port
- Supports Port Mirroring
- Compile with standard 19" Rack-mount size designed

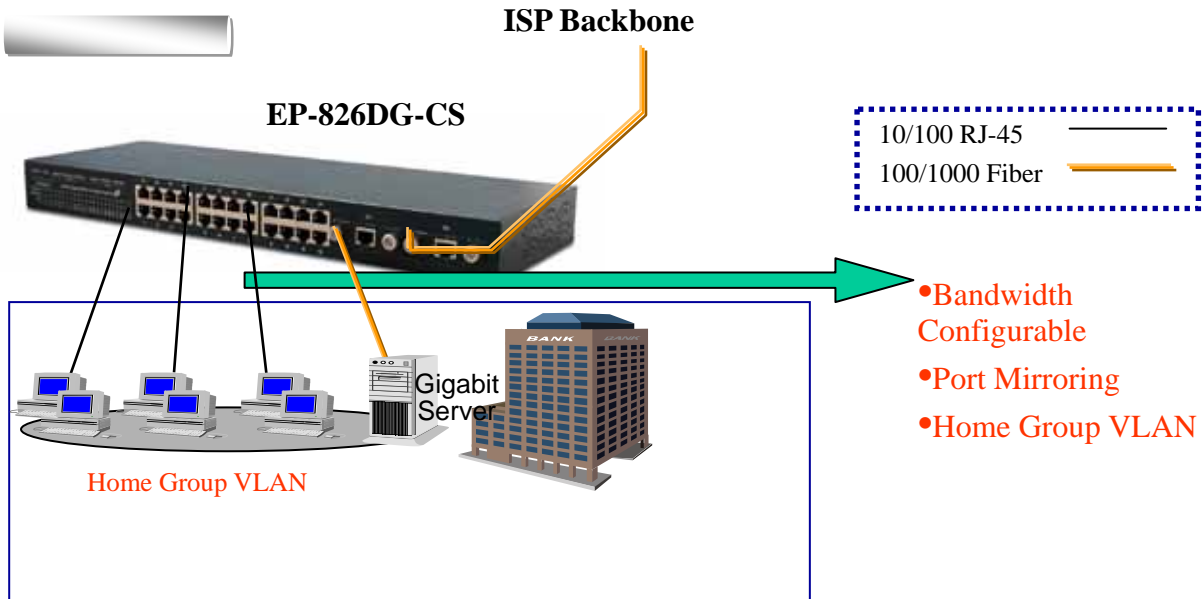
Model	EP-826DG-CS		
Standards	IEEE 802.3 10BASE-T Ethernet IEEE 802.3u 100BASE-TX Fast Ethernet IEEE 802.3x flow control IEEE 802.3ab 1000BASE-T IEEE 802.3z 1000BASE-SX		
Media	10BASE-T:UTP Cat. 3, 4, 5 100BASE-T:UTP Cat.5 or up 1000BASE-T:UTP Cat.5 or up 1000BASE-X: Multi-mode 50/125, 62.5/125 um, Single-mode 8/125, 9/125 um		
No. of 10/100M Port	24 * RJ-45 ports		
No. of Gigabit Port	2 slide-in slots for Copper or Fiber Gigabit port module option		
MAC Address Table	8K		
RAM Buffer	2.5Mbit		
Backplane Bandwidth	8.8Gbps		
Flow Control	Flow control for full-duplex, Back pressure for half-duplex mode		
Broadcast Storm Filtering	Yes		
VLAN	32 Port-based/Tag-based Group VLANs		
Trunk	Up to 8 10/100Mbps ports and 2 Gigabit ports		
QoS	2-level with port-based, 802.1p priority tag, TCP/IP header's TOS/DS classifier		
Bandwidth Control	8-level for each port		
IGMP Snooping	Yes		
Management	Console configuration		
Power Consumption	10.5W Max.		
Power Supply	Internal Switch Power (AC100~240V, 50~60Hz)		
Environmental			
Temperature	Operation	Temperature	Humidity
Humidity		0 ~55	10%~90%
Physical Dimension	440 x 148.5 x 44 mm		
Conformance	FCC, CE Class A		

► Application:

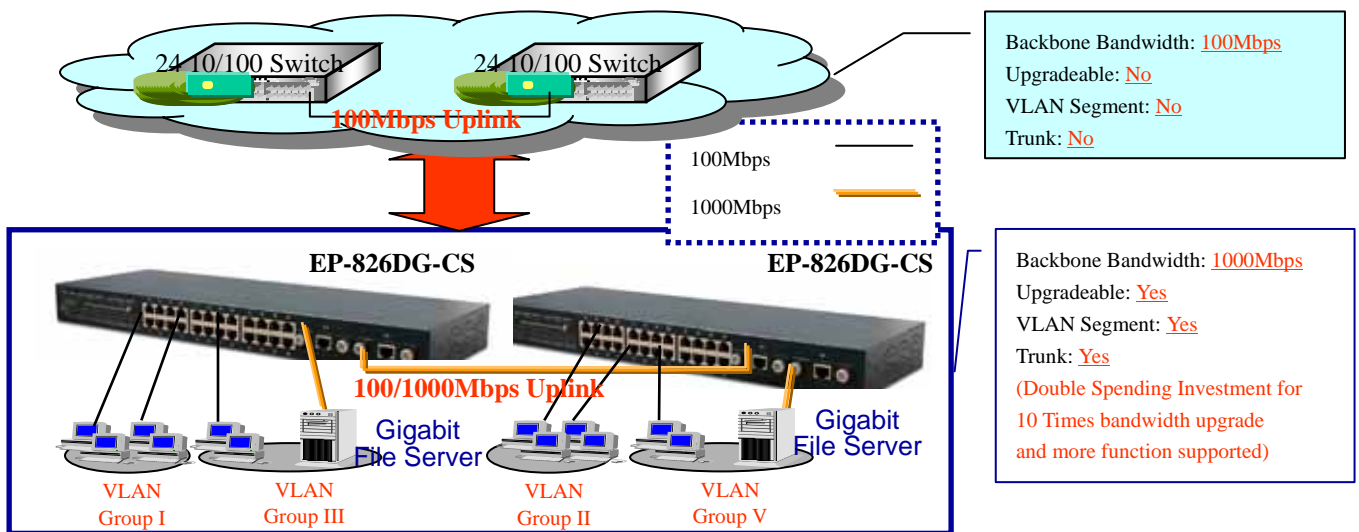
1.SMB



2. FTTx



3. Upgrade to Gigabit with best ROI



► Ordering Information

Model No.	Description
EP-826DG-CS	24+2G Gigabit Ethernet Rack-Mount Management Switch
101G-TX	10/100/1000M Gigabit copper module
101G-SC/ST	1000BASE-SX Gigabit SC/ST type Multi-mode Module

SURECOM Technology Corp.

6F, No.125, Sec. 2, Datung Road, Shijr City, Taipei 221, Taiwan
Tel: 886-2-8692-6200 Fax: 886-2-8692-6132

E-mail: sales@surecom.com.tw website: www.surecom.com.tw